



## CASCADE CANYON INSTALLATION INSTRUCTIONS

### SUITABLE SURFACES

Lightly textured or porous surfaces. Well bonded, solid floors. Dry, clean, well-cured concrete (cured for at least 60 days prior). Wood floors with plywood on top. Ceramic or porcelain tiles with grout lines filled with floor leveler. All surfaces must be clean and dust free.

### UNSUITABLE SURFACES

Rough, uneven surfaces including carpet and underlay. This product is not suitable for rooms that could potentially flood, or rooms that have damp concrete or saunas. Do not install this product in areas which are exposed to long term direct sunlight such as sun rooms or solariums.

**WARNING: DO NOT REMOVE OLD RESILIENT FLOORING. THESE PRODUCTS MAY CONTAIN EITHER ASBESTOS FIBERS OR CRYSTALLINE SILICA, WHICH CAN BE HARMFUL TO YOUR HEALTH.**

### PREPARATION

The best installation practice is to acclimatize Cascade Canyon at room temperature (approx. 68°F/20°C) 48 hours prior to and during installation. The temperature range for installation should be between 55 and 85°F (13 to 29.4°C).

Carefully check planks for any defects before installation. Any plank that has been installed will be deemed acceptable by the installer. Check that all ITEM NUMBERS are the same and that you have purchased sufficient material to complete the job. Remove any traces of glue or residue from the previous flooring.

New concrete floors need to dry out for at least 60 days prior to installation. Wood plank floors require a plywood subfloor. All nail heads must be driven down below the surface. Securely nail all loose boards. Scrape, plane or fill uneven boards, holes or cracks using a floor leveling compound if subfloor is uneven - over 1/8" (3.2 mm) within a span of 4' (1.2 m). If installing over existing tile, use a floor leveling compound to skim coat grout lines. Make sure the floor is smooth, clean, and free of wax, grease, oil or dust, and sealed as necessary before laying planks.

The maximum installation is 5,000 square feet (464.5 meters). For areas larger than 5,000 square feet, the floor will either require transition strips or it must be totally adhered to the subfloor using a universal pressure sensitive flooring adhesive (full spread) method. For the universal pressure sensitive flooring adhesive method, apply a high-tack universal flooring adhesive specifically designed for Homecrest Cascade Canyon plank flooring on the subfloor prior to installation. Avoid spreading more adhesive than required, as the adhesive could have dust settle on it if left exposed too long - reducing it's ability to adhere to the flooring. Follow the adhesive manufacturer's instructions. For floating installations with extreme temperature variations or floating installations larger than 2,500 square feet, a 5/8" (16mm) expansion gap is recommended at all vertical surfaces. Cascade Canyon is not designed to be installed as a floating floor under cabinets. If installed under cabinetry, Cascade Canyon must be fully adhered to the subfloor using a universal pressure sensitive flooring adhesive.

### TOOLS AND SUPPLIES

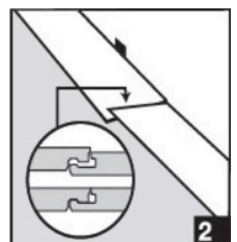
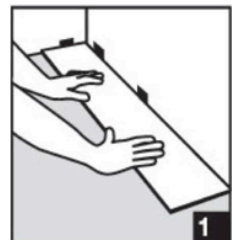
Saw, tapping block, rubber mallet, spacers, pencil, tape measure, ruler and safety goggles.

### INSTALLATION

#### Diagram 1

Start in a corner by placing the first plank with the tongue side facing the wall. Use spacers along each wall to maintain an expansion space of 3/8"-1/2" (8-12 mm) between the wall and the flooring.

**NOTE:** This spacing must also be maintained between the floor and all vertical surfaces, including cabinets, posts, partitions, door jambs and door tracks.



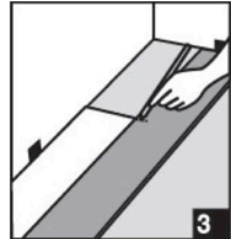
## CASCADE CANYON INSTALLATION INSTRUCTIONS

### Diagram 2

To attach your second plank, lower and lock the end tongue of the second plank into the end groove of the first plank. Line up edges carefully to ensure a close and tight fit. Using a rubber mallet, lightly tap the top of the end joints where the first and second planks lock together. The planks should lay flat to the floor.

**WARNING: FAILURE TO PROPERLY LINE UP THE END JOINT AND ATTEMPTING TO FORCE IT IN WHILE OUT OF ALIGNMENT COULD RESULT IN PERMANENT DAMAGE TO THE END JOINT.**

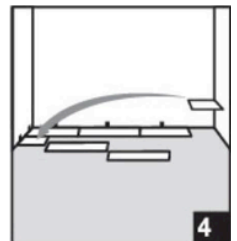
Repeat this procedure for each subsequent plank in the first row. Continue connecting the first row until you reach the last full plank.



### Diagram 3

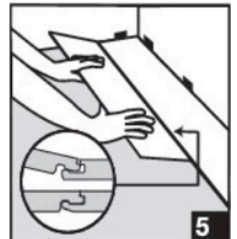
Fit the last plank by rotating the plank 180° with the pattern side upward and placing it beside the first row of planks with its end up against the far wall. Line up a ruler across the end of the last full plank and across this new plank. Draw a line across the new plank with a pencil and cut with a saw.

Rotate the plank 180° so that it is back to its original orientation. Lower and lock its end tongue into the end groove of the last full plank. Lightly tap the top of the end joints with a rubber mallet until the planks are flat on the floor.



### Diagram 4

You will begin the next row with the off-cut piece from the previous row to stagger the pattern. Pieces should be a minimum of 8" (200 mm) long and joint offset should be at least 8" (200 mm). Cut pieces should be no less than 3" (76.2 mm) in width. Adjust layout for a balanced look.



### Diagram 5

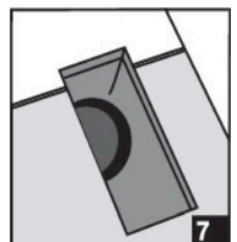
To start your second row, tilt and push the new plank's side tongue into the side groove of the very first plank. When lowered, the plank will click into place. Using a tapping block and rubber mallet, lightly tap the long side of the new plank to lock it with the planks of the first row. The planks should lay flat to the floor.

Attach the second plank of the new row first on the long side. Tilt and push plank into place, making sure edges are lined up. Lower plank to the floor. Using a tapping block and rubber mallet, lightly tap the long side of the new plank to lock it into place. Next, lightly tap down on the top of the end joints with a rubber mallet to lock them together. Continue laying remaining planks in this manner.



### Diagram 6

To fit the last row, lay a plank on the top of the previous row with its tongue to the wall. Lay a ruler across the plank so that it is lined up with the side of the planks of the previous row and draw a line across the new plank with a pencil. Don't forget to allow room for spacers. Cut the plank with a saw and attach into position.



### Diagram 7

Door frames and heating vents also require expansion room. First cut the plank to the correct length. Then place the cut plank next to its actual position and use a ruler to measure the areas to be cut out and mark them. Cut out the marked points allowing the necessary expansion distance on each side.



### Diagram 8

You can trim for door frames by turning a plank upside down and using a handsaw to cut away the necessary height so planks slide easily under frames. Remove spacers once the floor is completely installed.



## CASCADE CANYON MAINTENANCE INSTRUCTIONS

### CARE AND MAINTENANCE

Homecrest Cascade Canyon planks can withstand topical water and water penetration without damage. Water leakage over or around the outer edges of the flooring, however, can damage a wood subfloor, so clean up water as soon as possible. Any issues with a wet or damp concrete floor should be addressed before the installation of any flooring. Although Cascade Canyon can withstand a wide temperature variation, the occupied temperature range for foot traffic or rolling loads should be 50°F to 100°F (10°C to 38°C).

- Sweep regularly to remove surface grit and dust. Use a damp cloth or mop to clean up any dirt and footprints.  
**CAUTION:** Flooring may be slippery when wet.
- Never use wax, polish, abrasive cleaners or scouring agents as they may dull or distort the finish.
- Avoid exposure to direct sunlight for prolonged periods of time. Use drapes or blinds to minimize direct sunlight during peak sunlight hours.
- Save a few planks in case of accidental damage. Planks can be replaced or repaired by a flooring professional.
- If other trades are in the work area, a floor protector is highly recommended to help protect the finish of the floor.
- High heels can damage floors.
- Do not allow pets with unclipped nails to scratch or damage the floor.
- Use protective pads under furniture.
- Use doormats at entrance ways to protect the floor from discoloring. Avoid using rubber or latex backed rugs, as they may stain or discolor the flooring. If you have an asphalt driveway, use a heavy-duty doormat at your main door, as chemicals in asphalt can cause the flooring to yellow. Use a latex based driveway sealer to minimize potential staining from asphalt driveways.

**CAUTION:** Some types of nails, such as common steel nails, cement coated or resin-coated nails, may cause a discoloration of the flooring. Use only non-staining fasteners with underlayment panels. The procedure of gluing and screwing underlayment panels is not recommended. Solvent-based construction adhesives are known to stain vinyl floor coverings. The installer and/or consumer is responsible for any discoloration problems caused by fastener staining or the use of construction adhesives.



## CASCADE CANYON WARRANTY

### WARRANTY

This guarantee is for replacement of Homecrest Cascade Canyon plank flooring and labor as described below. It does not cover costs incurred with loss of time, incidental expenses or any other damage. It does not cover damage from improper installation or maintenance (including side or end gapping), tears, scratches, indentations, stains or reduction in gloss level due to normal use and/or exterior applications. Gapping, shrinkage, squeaks, fading or structural subfloor related issues are not covered under warranty. Temperature variations - above 120°F (48.9°C) or below 0°F (-17.8°C) - may cause expansion or contraction of the product.

#### **Residential Installations: 25 years**

Our 25-year Residential Limited Warranty means that for 25 years, from the date of purchase, your floor will be free from manufacturing defects and will not wear through or permanently stain from common household stains when installed and maintained according to instructions supplied with each carton.

**Within One Year** If a defect covered by this warranty is reported in writing within one year of purchase, we will supply new material of the same or similar quality to replace the defective material. Reasonable labor costs will also be covered.\* We will not pay to repair or replace material with defects that were apparent before or during installation.

**Within Two Years** If a defect covered by this warranty is reported in writing after one year but within two years of purchase, we will supply new material of the same or similar quality to replace the defective material. Fifty percent of reasonable labor costs will also be covered.\* We will not pay to repair or replace material with defects that were apparent before or during installation.

**After Two Years** If a defect covered by this warranty is reported in writing after two years but within twenty five years of purchase, we will supply new material of the same or similar quality to replace the defective material. We will not pay labor costs.  
\*NOTE: reasonable labor costs shall be determined solely by the manufacturer

#### **Light Commercial Installations: 7 years**

Our 7-year Light Commercial Limited Warranty means that for 7 years, from the date of purchase, your floor will be free from manufacturing defects and will not wear through or permanently stain from common household stains when installed and maintained according to instructions supplied with each carton.

**Within One Year** If a defect covered by this warranty is reported in writing within one year of purchase, we will supply new material of the same or similar quality to replace the defective material. Reasonable labor costs will also be covered.\* We will not pay to repair or replace material with defects that were apparent before or during installation.

**Within Two Years** If a defect covered by this warranty is reported in writing after one year but within two years of purchase, we will supply new material of the same or similar quality to replace the defective material. Fifty percent of reasonable labor costs will also be covered.\* We will not pay to repair or replace material with defects that were apparent before or during installation.

**After Two Years** If a defect covered by this warranty is reported in writing after two years but within seven years of purchase, we will supply new material of the same or similar quality to replace the defective material. We will not pay labor costs.  
\*NOTE: reasonable labor costs shall be determined solely by the manufacturer.

#### **Claims**

This guarantee applies only to the original purchaser and proof of purchase is required for all claims. Claims for wear must show a minimum dime sized area. To file a claim under warranty, contact the authorized dealer where the flooring was purchased.