



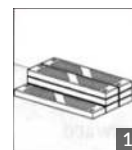
OASIS LAMINATE INSTALLATION INSTRUCTIONS

Tools & Accessories

- Appropriate foam underlayment or moisture barrier
- Electric saw
- Hammer
- Pencil
- Ruler/Tape Measure
- Pull bar
- ¼" spacers
- Tapping block

PREPARATION

- Laminate flooring is designed to be a floating floor that may be installed over virtually any type of subfloor with the exception of carpet. It is not nailed or glued to the subfloor.
- Acclimation of laminate flooring is necessary and important. To acclimate, place unopened cartons [1] on the floor in the room being installed at least 3' away from outside walls, heating/air conditioning vents, and direct sunlight for a minimum of 48 hours. Cartons should be stacked no more than 3' high. Maintain temperatures between 65 – 85° Fahrenheit and 45% to 65% relative humidity.
- Fill any low spots in the subfloor greater than 1/8" in 6' with a Portland cement leveling compound. Check this by using a 6' straight edge. Remove any high spots by sanding or grinding.



General Subfloor Requirements

- The subfloor surface must be flat, no greater variance than 1/8" across 6'. The subfloor must be structurally sound, clean of debris, and dry.
- Laminate flooring can be installed above, on or below grade.

Concrete Subfloors

- New concrete must cure for at least 60 days. Cover all concrete subfloors with an approved vapor retarder.
- Existing sheet vinyl, VCT, LVT, ceramic tile, and terrazzo installed over concrete require a vapor retarder and must meet flatness requirements.
- Any existing wood flooring glued to concrete must be removed prior to laminate installation.
- Carpet and pad or floating floors must always be removed prior to laminate installation.
- **On concrete covered with existing ceramic, marble, stone, vinyl tile, or linoleum – test floor for excessive moisture.** To do so, cut 3' x 3' squares of polyethylene plastic (one for every 200 sq. ft. of floor space). Spread around different areas of the subfloor for a more accurate evaluation. Tape all edges down firmly sealing them directly to the existing subfloor. Leave down for 24 to 48 hours; if moisture forms under the plastic or if the cement darkens then perform a moisture test. The maximum allowable reading is 5 lbs/1,000 sq. ft./24 hours.

Wood Subfloors

- Wood subfloors must be constructed according to local building codes, be structurally sound and deflection free.
- Repair any squeaky floors prior to installation. Sand or plane high spots. Fill all low spots with a cement based patching compound. Floor patch to be applied according to the manufacturer's recommendations.
- Wood subfloors constructed over a crawl space must have adequate ventilation, 1.5 sq. ft. per 100 sq. ft. of floor space. The ground or concrete must be covered with a manufacturers approved vapor retarder to prevent damage due to excessive water vapor emissions. Overlap joints 8" and cover the entire crawlspace.
- Basement walls/floors must be dry to prevent damage due to excessive water vapor emissions into the wood subfloor overhead.
- The moisture content of a wood subfloor must not exceed 14%.

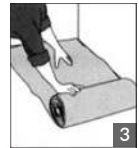
OASIS LAMINATE INSTALLATION INSTRUCTIONS

General Subfloor Preparation

- Remove any existing floor molding (if any) except for the wall baseboards.
- Undercut doorframes [2]. Lay a loose plank upside down on top of the underlayment against the frame. This will be your guide for proper height to allow installed planks to float under it. Saw the bottom of the doorjamb case molding back to the wall studs, laminate is fitted under doorjamb case molding.
- Sweep or vacuum up all subfloor debris.

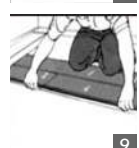
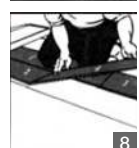
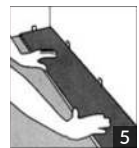
Installing Underlayments

- On Wood Floors – use any laminate underlayment. Tape seams together when going over wood or organic subfloor.
- On Concrete Floors – use an underlayment with a moisture barrier. Underlayment should be rolled out with the seams pulled together; both should go up the wall at least 2" when used over concrete. Tape underlayment seams using a 2" underlayment tape. If wood flooring is adhered over concrete, IT MUST BE REMOVED before installing laminate flooring.
- Unroll underlayment [3] along the longest wall. All work is done from left to right. Planks should run lengthwise against the longest wall, and if possible, [4] parallel to incoming sunlight.



START OF INSTALLATION

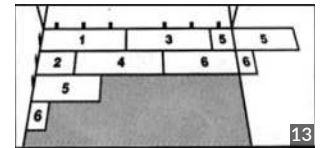
- The width of the first row of planks should be approximately the same width as the last row. This may require cutting the first row plank to a smaller width. Measure across the room (inches) and divide the width of a plank to see how many full width planks will be used and what side width is needed for the last row. Last row should never be under 2" in width.
- Use 1/4" spacers [5] to maintain the proper expansion gap around the entire perimeter of the floor. Quarter Round molding will cover this expansion gap. IMPORTANT: this 1/4" gap must be maintained around cabinets, pipes, toilet flanges and any other obstacle on the floor.
- INSPECT EACH BOARD CAREFULLY FOR DAMAGE PRIOR TO INSTALLING IT. Do not install a damaged plank.
- Check groove on plank to make sure it is clean or free of debris. Determine the installation direction. It is recommended to install the length direction of the planks parallel to the main light direction.
- To lock planks together [6] insert tongue into the groove at a slight angle, when the top edges meet, rotate downward. Planks will click together for a tight fit. If there are any gaps, reconnect the planks. Connect end edges first, then the longer side edges of the planks. Start by building a 2-row rack. To do this, start with 4 planks (See Master Installation Strategy [13]), plank 1 should be full length, plank 2 should be cut to 1/3 its original length (approximately 16"). This will give the proper amount of stagger to the end joints and thereby make your floor more secure. This 2-row rack can be built either directly against the start wall and the spacers, or away from the wall so that you can kneel on one row and pull the second row toward you.
- Connect plank 2 to plank 1 by inserting end tongue [6] into edge groove at a slight angle. When top laminate surfaces touch, rotate downward.
- Connect plank 3 to plank 1 by [7] inserting end tongue into end groove, keeping the edges perfectly aligned. When the top laminate surfaces touch, rotate downward.
- Connect plank 4 to planks 2 and 3 by [8] first joining the ends of 4 to 2. To do this, leave a gap where the tongue and groove of planks 3 and 4 are. Once the ends are connected, [9] place a hand under the locked ends, raise the planks slightly upwards (1"-2"). This angle will now allow you to slide the tongue of plank 4 into the groove of plank 3 (the end joint will slide down into place without releasing) when top laminate edges meet, rotate both planks (4 and 2) downward. Use a 4"-6" tapping block piece to hold the tongue and the groove on the same plane, limit end joint damage and ensure planks engage square. Strike tapping block with multiple light taps until end-joints close. [11]
- NOTE: Tapping too hard or striking the tapping block unevenly can result in installation-related damage or peaking.
- Continue to build these 2 rows until you reach the adjoining wall, leaving your 1/4" expansion space. When door molding or other obstruction won't allow the needed space to rotate the plank downward, align tongue to groove and use pull bar [10] to tap the tongue into the groove until top laminate edges meet.
- If you build these rows away from the starting wall, go ahead and push them into position now. Be sure to place 1/4" spacers at both ends of each row, and 2' intervals along the start wall.
- If the starting wall is uneven, you can scribe the contour of the wall onto the first row of planks. Use a 2" square block and a pencil and follow the contour. Disassemble, cut at line and reassemble.
- Begin the third row with a plank cut to 1/3 its original length (approximately 32"). This could be from one of the cut planks from row 1 or 2 (see Master Installation Strategy illustration [13]).



OASIS LAMINATE INSTALLATION INSTRUCTIONS

REMAINDER OF FLOOR INSTALLATION

- Repeat the process of using random length start planks (minimum of 16") to ensure a more natural look.
- Randomly pull planks from 3 cartons at a time to ensure random appearance. Use cut pieces from the end of each row as starting planks. Always stagger end joints a minimum of 12"; make random to avoid a repeating pattern.
- All joints should be a tight fit with no gaps [11]. Stop and reconnect if a joint is not tight or if all edges are not even with adjacent planks. These planks can be engaged and disengaged several times if needed to help make a correct installation. Use the tapping block if necessary.
- When cutting the last row, place a full row of planks directly on the top of the last row of installed planks (keeping the tongue in the same direction of the installed planks). Use the full width of scrap pieces of plank, insert a 1/4" spacer between wall and scrap piece of plank [12]. Place a pencil next to the edge and trace a line down the planks following the contour of the wall. Cut planks on the pencil line and connect last row. If space won't allow downward rotation, lay the plank flat to underlayment and use pull bar [10] and hammer to tap into place, leaving no gaps.
- **For 8mm thick products:** Floor spans greater than 40' require transition pieces to allow for expansion and contraction.
- **For 12mm thick products:** Floor spans greater than 65' require transition pieces to allow for expansion and contraction.



For bathroom installations, it is very important to prevent water or moisture from getting under the flooring. Remove the toilet before installing the laminate flooring. Seal all expansion spaces including around the toilet flange and any pipes with mildew resistant 100% silicone caulking compound.

When installing Homecrest Oasis Laminate Flooring in a kitchen all expansion spaces subject to moisture or plumbing leaks must be sealed using a mildew resistant 100% silicone caulking compound. Fill the expansion space in front of the sink and dishwasher, around the refrigerator and icemaker, exterior doors and any other area subject to flooding. Kitchen cabinets must be installed prior to installing laminate flooring. Install the plank up to the kick plate of the cabinets, leaving a minimum 1/4" expansion space. Cover the expansion space with a quarter round.

NOTE: Homecrest Oasis Laminate Flooring should not be installed in rooms with a floor drain, sump pump or any area that is exposed to the outdoor elements.

Radiant Heat

Homecrest Oasis Laminate Flooring can be used in combination with many types of in-floor heating. The heating system can be cast in a concrete floor or in a thin layer of filler on the surface of a concrete subfloor. It can also be installed under a wood subfloor or installed on the surface of a subfloor as matting. Follow the instructions from the supplier of the floor heating system. The heating system must be in operation for at least 2 weeks prior to the installation of laminate flooring. The system may be turned off or set to a suitable installation temperature (65° – 72° F.) After installation, the temperature may be increased slowly at the rate of approximately 5° per day, and should not exceed 85° F. Follow the instructions from the manufacturer of the floor heating system that do not conflict with the above requirements.

OASIS LAMINATE MAINTENANCE INSTRUCTIONS

Ordinarily vacuuming or sweeping is usually sufficient to keep the floor clean. If needed, occasionally clean with a cloth or micro-fiber/terrycloth mop slightly dampened with water or laminate flooring cleaner.

Important Tips

If topical residue is noticed immediately after installation, Swiffer Wet-Jet with Dawn can be used to remove it.

Floors must never be waxed, polished, sanded or refinished, and never use steam when cleaning. Do not use detergents, abrasive cleaners, soaps, waxes or polishes.

To protect from scratches, place walk-off area rugs or mats inside exterior doorways to collect small bits of gravel. We recommend using felt protectors on the legs of furniture and replacing plastic or metal casters with rubber wheels, and lift, rather than slide, heavy objects across the floor. Replace plastic or metal casters on chairs with rubber wheels and lift rather than slide heavy objects across the floor. Keep pets nails trimmed.

Promptly remove all liquid spills.

OASIS LAMINATE WARRANTY

Homecrest Oasis Laminate carries a 25 year Residential and 5 year Light Commercial Warranty

The following warranty applies to the original purchaser for as long as he or she owns the flooring: 1) the laminate surface will not wear through; 2) the floor will not fade due to sun or electrical light; 3) the floor will not stain; 4) the floor will resist damage from moisture due to everyday household spills removed within seventy-two hours; and 5) the joint will remain secure under normal use conditions. This limited warranty is subject to the conditions described in the "Conditions" section below.

Any product within the Homecrest Oasis Laminate collection will not be damaged by topical, localized spills provided they are removed within 72 hours.

The following terms and conditions apply to this extended warranty:

1. The warranty applies only to the first owner and first installation of the Products and may not be transferred. This warranty applies only to first quality product purchases made after the edition date of these warrant conditions for the designated time period when the product is installed indoors. The laminate may not be installed in areas of extremely high temperatures or humidity such as saunas and swimming pool areas.
2. This warranty applies only to defects inherent to the material supplies. It includes the delamination of the wear layer but does not include wear along the edges of the planks less than 3/16" from the edge. Manufacturer will repair or replace the product at its option. When replacement of the flooring is made, only new flooring from the current product range at the time the complaint is upheld will be supplied by the retailer or contractor. Responsibility under this warranty only applies to hidden defects. Flooring planks installed with obvious visual defect are not covered under this warranty.
3. These limited warranties do not apply to flooring installed on a concrete subfloor unless a non-recycled (100% virgin resin) 6-mil polyethylene film vapor barrier with a density of 0.92 lbs/cubic foot and a thickness tolerance of +/- 10% is installed over the concrete subfloor that emits a water vapor no greater than 5 lbs./1,000 sq. ft./24 hours.
4. This warranty does not apply to laminate flooring that has been put to abnormal use or abused in any way. These conditions may include, but are not limited to:
 - a. Damage caused by negligence, improper installation, care, maintenance as outlined in this warranty and Manufacturer's installation instructions
 - b. Flooring that has been damaged or neglected during transportation.
 - c. Damage to click joints or indentation due to heavy rolling loads.
 - d. Damage caused by improper alterations or inadequate care of the product. Damage resulting from the use of rotating beater bars, floor scrubbers, steamers, jet mops, buffers or similar products is not covered by this limited warranty.
 - e. Scratches, stains, indentations, marks or wear caused by exposure to high-heeled shoes, furniture, pets, grit, sand, pebbles and other elements that may alter the appearance of the product when proper care and/or consideration is not present.
 - f. Damage caused by moisture standing on the floor for a period of greater than 72 hours or the use of inappropriate cleaning products. Prolonged moisture exposure exceeding 72 hours could damage your laminate flooring. These limited warranties do not apply to damage caused by events beyond everyday household spills including pet urine and/or excessive wet maintenance or from using detergents, abrasive cleaners, soaps, waxes or polishes.
 - g. Damage caused by water or moisture trapped beneath the floor including, but not limited to, hydrostatic pressure of other conditions that result in water or moisture originating below the floor, including storms, flooding, standing water, plumbing leaks, mechanical failures, appliance leaks, or other conditions that result in water or moisture being below the floor.
 - h. Damage arising as a result of flooring installed in an outdoor area, solarium, porch, garage or areas prone to extreme variations in temperature and/or humidity levels.
 - i. Damage caused by an Act of God
 - j. This warranty covers only the flooring panels and professional replacement. Manufacturer will not be responsible for any loss of time, inconvenience, expenses, or other damages caused by or resulting from a problem about which a claim is made.
 - k. These limited warranties do not apply to wear and tear of the flooring that occurs naturally and inevitably as result of normal wear or aging. Such changes include but are not limited to cosmetic changes such as color, gloss, grain, pattern and tone and other discernible changes such as hollow sounds, squeaking and popping of the flooring.

It is the responsibility of the owner/installer to inspect the flooring. It is also the owner/installer's responsibility to ensure that the jobsite conditions, and the jobsite subfloors are environmentally and structurally acceptable prior to the beginning of installation. Prior to installation, the owner and/or installer are responsible for the final inspection of materials and are encouraged to report any deficiencies in grade, manufacture and finish directly to the seller. If an individual piece is questionable or does not meet standards, it should not be used. Materials installed with visible defects will not be covered by the warranty. The owner and/or installer are responsible for ensuring that the proper installation conditions and appropriate subfloors meet or exceed all NALFA industry standards. Proper installation can be affected by adverse moisture content in the product, humidity at the jobsite, acclimation of flooring to local site conditions, preparation of jobsite, preparation of subfloor, and flooring layout. The subfloor must be clean, flat, dry and structurally sound. We recommend ordering 5% above the actual square footage requirements to allow for cutting and grading of material. All installation methods must follow NALFA guidelines and according to Manufacturer's installation instructions.

OASIS LAMINATE WARRANTY

WARRANTY

This guarantee is for replacement of Homecrest Oasis Laminate flooring and labor as described below. It does not cover costs incurred with loss of time, incidental expenses or any other damage. It does not cover damage from improper installation or maintenance (including side or end gapping), tears, indentations, stains or reduction in gloss level due to normal use and/or exterior applications. Gapping, shrinkage, squeaks, fading or structural subfloor related issues are not covered under this warranty. Temperature variations - excessive heat (above 100°F/37.8°C) or below freezing (32°F or 0°C and below) - may cause expansion or contraction of the product.

Residential Installations: 25 years

Our 25-year Residential Limited Warranty means that for 25 years, from the date of purchase, your floor will be free from manufacturing defects and will not wear through or permanently stain from common household stains when installed and maintained according to instructions supplied with each carton.

Within One Year If a defect covered by this warranty is reported in writing within one year of purchase, we will supply new material of the same or similar quality to replace the defective material. Reasonable labor costs will also be covered.* We will not pay to repair or replace material with defects that were apparent before or during installation.

Within Two Years If a defect covered by this warranty is reported in writing after one year but within two years of purchase, we will supply new material of the same or similar quality to replace the defective material. Fifty percent of reasonable labor costs will also be covered.* We will not pay to repair or replace material with defects that were apparent before or during installation.

After Two Years If a defect covered by this warranty is reported in writing after two years but within twenty five years of purchase, we will supply new material of the same or similar quality to replace the defective material. We will not pay labor costs.

*NOTE: reasonable labor costs shall be determined solely by the manufacturer

Light Commercial Installations: 5 years

Our 5-year Light Commercial Limited Warranty means that for 5 years, from the date of purchase, your floor will be free from manufacturing defects and will not wear through or permanently stain from common household stains when installed and maintained according to instructions supplied with each carton.

Within One Year If a defect covered by this warranty is reported in writing within one year of purchase, we will supply new material of the same or similar quality to replace the defective material. Reasonable labor costs will also be covered.* We will not pay to repair or replace material with defects that were apparent before or during installation.

Within Two Years If a defect covered by this warranty is reported in writing after one year but within two years of purchase, we will supply new material of the same or similar quality to replace the defective material. Fifty percent of reasonable labor costs will also be covered.* We will not pay to repair or replace material with defects that were apparent before or during installation.

After Two Years If a defect covered by this warranty is reported in writing after two years but within seven years of purchase, we will supply new material of the same or similar quality to replace the defective material. We will not pay labor costs.

*NOTE: reasonable labor costs shall be determined solely by the manufacturer.

Claims

This guarantee applies only to the original purchaser and proof of purchase is required for all claims. Claims for wear must show a minimum dime sized area. If you wish to file a claim under warranty, contact the authorized dealer where the flooring was purchased.