



Cascade Ridge
WATERPROOF FLOORING

Cascade Canyon
WATERPROOF FLOORING

Cascade Summit
WATERPROOF FLOORING



Verify that the hologram on the box ends of the material has the i4F L2C Hologram. If it does, continue on with these instructions. If it has a Unilin L2C hologram, click [here](#) for the correct installation guidelines.



INSTALLATION GUIDELINES AND MAINTENANCE INSTRUCTIONS

Congratulations on your new flooring!

When properly installed and maintained, your new flooring will look beautiful for many years. Please read all information provided in this documentation prior to installation. Failure to follow installation instructions will void product warranty.

PLEASE READ THESE INSTRUCTIONS THOROUGHLY PRIOR TO STARTING INSTALLATION.

INSTALLER'S AND OWNER'S RESPONSIBILITY:

Homecrest Flooring is manufactured to the highest standards of product quality, on occasion manufacturing defects may occur and not be caught at quality control. It is the joint responsibility of the installer and owner to properly inspect the flooring for defects prior to installation. If defects are found notify the seller immediately prior to proceeding. In addition, it is imperative that all item numbers/color names are verified as the intended product purchased and reflects the correct color, level of variation, finish texture, and gloss level as anticipated.

Product with visual defects or intended pattern characteristics that are deemed undesirable should not be installed. Flooring with visual defects that have been installed are not covered by warranty.



Cascade Ridge
WATERPROOF FLOORING

Cascade Canyon
WATERPROOF FLOORING

Cascade Summit
WATERPROOF FLOORING

GENERAL PREPARATIONS:

- Flooring can be damaged when proper precautionary transportation and handling methods are not exercised prior to installation. Use care when storing, transporting, and handling flooring. Cartons should be stored flat on bottom of box, never on edge.
- Flooring material is heavy and can be challenging to move. Always use proper lifting techniques when manually moving. Never lift more than you can safely handle. We recommend the use of material-handling equipment whenever possible.
- Ensure you have the appropriate amount of material present to complete job (including an additional 5%-10% for waste, trimming and for potential future plank replacement needs).
- Verify subfloor/site conditions meet standards provided within these instructions. If they are not compliant, do not install until they have been corrected.
- This product is not recommended for residential or light commercial applications where rolling loads, including but not limited to power or manual wheelchairs, are present. We recommend using a direct glue down product like Homecrest Mission Point in these situations.
- Special consideration should be given when installing near heat sources such as fireplaces and wood stoves to avoid overheating the surface of the floor in the immediate area. Failure to do so can result in warped planks causing the floor to lift up from the subfloor and/or buckle.

SUBFLOOR PREPARATION:

- Ensure subfloor is smooth, flat, level, and structurally sound. Must be flat within tolerance of 3/16" over a 10' radius or 1/8" over a 6' radius. Scrape, plane, or fill uneven boards, holes or cracks using a floor leveling compound to ensure the subfloor is even.
- Subfloor surface must be dry and clean. Make sure it is free of debris, wax, solvents, paint, grease, oil, dust, adhesive residue, foreign matter, and/or contaminants.

CONCRETE SUBFLOORS

- New and existing concrete floors need to be well-cured and dry for a minimum of 60 days prior to installation.
- Recommended PH level between 7 and 9.
- We do not recommend installing flooring over concrete floors with high moisture or in places where hydrostatic pressure could become present. Per industry standard, ASTM F2170, RH should not exceed 75%.

WOOD SUBFLOORS

- Existing wood flooring must be properly fastened, and we recommend repairing any loose boards or squeaky areas and installing plywood on top prior to installation of this product.
 - We recommend laying perpendicular to existing flooring boards.
- Plywood, OSB, Particleboard, etc... must be structurally sound, properly fastened, and installed per the manufacturer's instructions.
- All nail heads must be driven below the surface. Securely nail all loose boards.



Cascade Ridge
WATERPROOF FLOORING

Cascade Canyon
WATERPROOF FLOORING

Cascade Summit
WATERPROOF FLOORING

Caution: Some types of nails, such as common steel nails, cement or resin coated nails, may cause discoloration of flooring. Use only non-staining fasteners with underlayment panels. The procedure of gluing and screwing underlayment panels is not recommended. Solvent based construction adhesives are known to stain vinyl floor coverings. The installer and/or consumer is responsible for any discoloration problems caused by fastener staining or use of construction adhesives.

EXISTING FLOOR COVERINGS

- Ceramic or porcelain tiles with grout lines must be filled with floor leveler.
- Existing sheet vinyl flooring should not exceed one layer and should not be heavily cushioned.

WARNING: DO NOT REMOVE OLD RESILIENT TILE FLOORING. THESE PRODUCT MAY CONTAIN EITHER ASBESTOS FIBERS OR CRYSTALLINE SILICA, WHICH CAN BE HARMFUL TO YOUR HEALTH.

DO NOT INSTALL over rough, uneven, or soft surfaces including carpet, carpet pad and/or with additional cushioned underlay products.

This product is not suitable for outdoor use, sunrooms, or solariums. Do not install in areas that are at risk of flooding or in spaces with saunas.

RADIANT HEAT

Consult with the manufacturer of the radiant heating system to ensure that it is compatible with this flooring. The selection and use of any radiant heating system is the choice and sole responsibility of the owner/purchaser/installer. In-floor heat must be embedded at least ¼" below the base of the flooring. Radiant heat system should be activated and ran at 68°F for 1 week prior to installing the flooring. Temperature in heat system must never exceed 80°F and changes in temperature settings must be gradual (5° increments). Surface temperature of flooring should never exceed 82°F. Hydronic in-floor heat requires a 72-hour acclimation period.

ACCLIMATION:

Acclimate flooring horizontally at room temperature (approx. 68°F) for 48 hours prior to installation and maintain temperatures between 55°F and 85°F during installation. Do not remove flooring from boxes during the acclimation period.

EXPANSION SPACE:

- This flooring is designed to be installed as a floating floor and must be able to expand and contract in all directions. **Do not install** fixed objects, such as cabinets, islands, wall units etc... on top of the flooring or fasten trim/molding/transition pieces directly to and/or through the floor.



Cascade Ridge
WATERPROOF FLOORING

Cascade Canyon
WATERPROOF FLOORING

Cascade Summit
WATERPROOF FLOORING

- An expansion space should be maintained between the floor and all other vertical surfaces, including cabinets, posts, partitions, door jambs, door tracks, pipes, etc...
- Maximum installation is 5,000 square feet. Areas larger than 5,000 square feet will require the use of transition moldings. Continuous installation runs in any direction exceeding 80' requires the use of transition moldings.
- For spaces larger than 2,500 SF, a 1/2" expansion space is recommended. For spaces smaller than 2,500 SF, a 3/8" expansion space is recommended. Expansion space should be covered by moldings. Do not install moldings tight to flooring as it may pinch the flooring not allowing it to float as intended.
- For complicated installations including spaces with multiple rooms, hallways, and any doorways less than 32", it is recommended that transition moldings be used.

TRANSITION MOLDINGS:

When using coordinating transition moldings, it is recommended that you select the flooring planks that coordinate best with the trim prior to beginning the installation and set aside. Use selected planks during installation in the areas where trims will be installed later to ensure most desirable finished project. Install transition moldings, glue the moldings to the track or subfloor but never directly to the flooring to provide proper expansion space.

TOOLS AND SUPPLIES:

Saw, rubber mallet, 3/8" – 1/2" spacers, pencil, tape measure, straight edge/ruler, safety goggles

INSTALLATION:

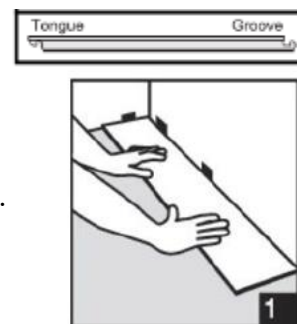
- Remove baseboards, quarter-rounds, wall bases, appliances, and furniture from space.
- Remove existing flooring, if applicable.
- Undercut door casings, using a piece of this flooring to gauge proper height/depth, if applicable.
- Remove all debris and dust from subfloor surface using broom and vacuum.
- Work from 2-3 boxes during installation, mixing plank visuals to minimize shade variation and provide best result. Check all planks in daylight during installation from various angles.

MEASURE INSTALLATION AREA

The board width of the first and last rows should not be less than 3". Measure length of the room in inches. Divide it by the width of the planks that are to be installed. If the resulting number is less than 3", you will need to cut down the width of the planks on your first row accordingly.

DIAGRAM 1

Begin at the left corner of the starting wall. Wall may not be straight. If it is not straight, you may need to trim the edge of the first row of flooring boards to match the shape of the wall. Remove tongues with saw on length side of planks on the boards being used for the first row. Slide the first board into the corner with the planks tongue side facing the wall. Set spacers between the wall and the board at the end and along the length of the board.

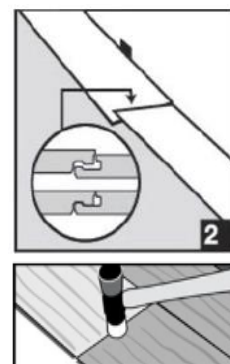


A 3/8" – 1/2" gap around perimeter is necessary to allow for proper expansion space. Do not remove spacers until the installation is complete.

Note: This spacing must also be maintained between the floor and all vertical surfaces, including cabinets, posts, partitions, door jambs, door tracks, fireplaces, etc...

DIAGRAM 2

To attach your second plank, overlap and lower the tongue end of the second plank into the groove end of the first plank and align side edges to ensure proper engagement of the locking mechanism. To secure joint, press down with thumbs on surface of each side of plank 2. Continue pressing until the two planks are flush along the end joint. If necessary, a rubber mallet may be used to gently tap the end joint on the surface of plank 2 until boards are same height. The planks should lay flat to the floor.



Repeat the above procedure for each subsequent plank in the first row. Continue connecting the first row until you reach the last full plank.

FAILURE TO PROPERLY LINE UP END JOINT AND ATTEMPTING TO FORCE IT IN WHILE OUT OF ALIGNMENT COULD RESULT IN PERMANENT DAMAGE TO THE END JOINT AND EVENTUAL BOARD SEPERATION.

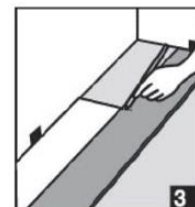


IMPORTANT

If both plank ends are not perfectly aligned, smooth, and level, they are not engaged properly. You will need to disassemble and check if there is debris obstructing the locking mechanism. Instructions to separate/disassemble planks can be found on page 6.

DIAGRAM 3

At the end of row one, cut a plank to fit. Fit the last plank by rotating plank 180° with pattern side upward and place it beside the first row with its end against the far wall, leaving proper expansion space. Line up ruler across the end of the last full plank and draw a line across new plank with pencil. Use saw to cut.



Rotate the plank 180° so it is back to its original orientation. Lower and lock its tongue into the end of the groove of the last full plank. Ensure the plank is aligned to ensure proper engagement. Press end joints with thumbs to engage and gently tap with rubber pallet until secure and planks lay flat to the floor and are smooth and level.

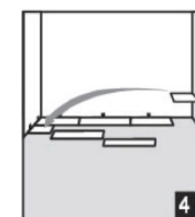


DIAGRAM 4

Start the second row with the leftover cut of the last plank from the previous row. This piece should be a minimum of 8" long and joint offset should be at least 8". Whenever possible, use the piece cut from previous row to start next row. Adjust layout for a balanced staggered look.

DIAGRAM 5

To begin the second row, tilt plank at a 30° angle and insert the tongue of the long side into the groove of the first row and then rotate lowering into place. Planks should be same height and lay flat to floor. Position the second board in row 2 in the same manner with its left end aligned with the right end of the previous board. You may need to slide this board left and right in the groove a few times to help seat it into the previous row. Overlap the tongue of this board with the groove of the previously installed board, pushing plank into place, making sure edges are aligned properly. Press firmly with thumbs on short end joint to engage. Ensure there are no gaps, and the end joints are properly aligned. Then gently tap with rubber mallet on top of plank only on short end until secure. Planks will lay flat to floor and will be smooth and level with one another. Continue laying planks in this manner.

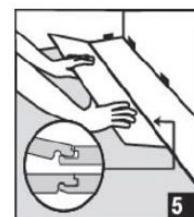


DIAGRAM 6

To fit the last row, lay a plank on the top of the previous row with its tongue to the wall.

Lay a ruler across the plank so that it is lined up with the side of the planks of the previous row and draw a line across the new plank with a pencil. Don't forget to allow room for spacers. Cut the plank with a utility knife/saw and attach into position. The last row should be no less than 3" in width.



DIAGRAM 7

Door frames and heating vents also require expansion space. First, cut the plank to the correct length. Then place the cut plank next to its actual position and use a ruler to measure the areas to be cut out and mark them. Cut out the marked point allowing the necessary expansion area on all sides.

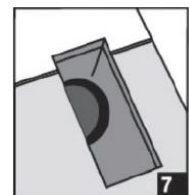
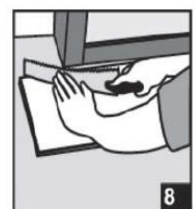


DIAGRAM 8

Trim door frames by turning plank upside down and using a handsaw to cut away the necessary height so planks slide easily under frames. Complete installation by installing your baseboard moldings covering the expansion gaps allowing slight clearance between the molding and the flooring planks. Do not install moldings tight to flooring. Nail moldings to the wall surface, not through the flooring. *Failure to provide proper clearance between moldings and flooring or nailing moldings through flooring will cause the floor to become pinned and could result in future plank separation or buckling.*





PLANK DISASSEMBLY INSTRUCTIONS

Separate entire row by gently lifting up at an angle (no more than 5°) then to separate planks, lay them flat on the ground and slide them apart in opposite directions.

DO NOT FOLD UPWARD! This could damage the end joint and locking mechanism.

POST INSTALLATION:

- Save a few planks in case of accidental damage. Planks can be replaced or repaired by a flooring professional, if necessary.
- If other trades are in the work area, a floor protector is highly recommended to help protect the finish of the floor.

CARE AND MAINTENANCE

- Temperature in space should be maintained between 41°F - 95°F.
Please note that extreme variances in temperature can cause expansion and contraction not only in the flooring itself but the structure as well. Flooring can warp if subject to excessive heat and will shrink if exposed to excessive cold. Exposure to long term direct sunlight can cause expansion damage to your floor. Surface of flooring should never exceed 82°F.
- Avoid exposure to direct sunlight for prolonged periods of time. Use drapes or blinds to minimize direct sunlight during peak sunlight hours.
- Flooring can withstand topical water and water penetration without damage. Water leakage over or around the outer edges of flooring can damage subfloor, so clean up topical spills as soon as possible. **CAUTION:** Floor may be slippery when wet.
- Sweep regularly to remove surface grit and dust. Use a damp cloth or mop to clean up any dirt or footprints.
- Never use wax, polish, abrasive clears or scouring agents as they may dull or distort the finish.
- Use protective felt pads under furniture and remove debris from them regularly to avoid damage.
- Use doormats at entrance ways to protect floor from discoloring. Avoid using rubber or latex backed rugs, as they may stain or discolor floor. If you have an asphalt driveway, use a heavy-duty doormat at your main door, as chemicals in asphalt can cause flooring to yellow. Use latex-based driveway sealer to minimize potential staining from asphalt drives.
- Furniture with castors require the use of a floor protection pad/mat.
- Do not drag or slide heavy objects across floor.
- High heels and pets with unclipped nails can scratch or damage flooring.



CASCADE SUMMIT WARRANTY

WARRANTY

This guarantee is for replacement of Homecrest Cascade Summit plank flooring and labor as described below. It does not cover costs incurred with loss of time, incidental expenses or any other damage. It does not cover damage from improper installation or maintenance (including side or end gapping), tears, indentations, stains or reduction in gloss level due to normal use and/or exterior applications. Gapping, shrinkage, squeaks, fading or structural subfloor related issues are not covered under this warranty. Temperature variations - above 120°F (48.9°C) or below 0°F (-17.8°C) - may cause expansion or contraction of the product.

Residential Installations: 50 years

Our 50-year Residential Limited Warranty means that for 50 years, from the date of purchase, your floor will be free from manufacturing defects and will not wear through** or permanently stain from common household stains when installed and maintained according to instructions supplied with each carton.

Within One Year If a defect covered by this warranty is reported in writing within one year of purchase, we will supply new material of the same or similar quality to replace the defective material. Reasonable labor costs will also be covered.* We will not pay to repair or replace material with defects that were apparent before or during installation.

Within Two Years If a defect covered by this warranty is reported in writing after one year but within two years of purchase, we will supply new material of the same or similar quality to replace the defective material. Fifty percent of reasonable labor costs will also be covered.* We will not pay to repair or replace material with defects that were apparent before or during installation.

After Two Years If a defect covered by this warranty is reported in writing after two years but within twenty five years of purchase, we will supply new material of the same or similar quality to replace the defective material. We will not pay labor costs.

*NOTE: reasonable labor costs shall be determined solely by the manufacturer.

Light Commercial Installations: 10 years

Our 10-year Light Commercial Limited Warranty means that for 10 years, from the date of purchase, your floor will be free from manufacturing defects and will not wear through** or permanently stain from common household stains when installed and maintained according to instructions supplied with each carton.

Within One Year If a defect covered by this warranty is reported in writing within one year of purchase, we will supply new material of the same or similar quality to replace the defective material. Reasonable labor costs will also be covered.* We will not pay to repair or replace material with defects that were apparent before or during installation.

Within Two Years If a defect covered by this warranty is reported in writing after one year but within two years of purchase, we will supply new material of the same or similar quality to replace the defective material. Fifty percent of reasonable labor costs will also be covered.* We will not pay to repair or replace material with defects that were apparent before or during installation.

After Two Years If a defect covered by this warranty is reported in writing after two years but within seven years of purchase, we will supply new material of the same or similar quality to replace the defective material. We will not pay labor costs.

*NOTE: reasonable labor costs shall be determined solely by the manufacturer.

**NOTE: Wear through means complete loss of wearlayer resulting in changes to the printed visual over a minimum of 3% of the total installation.

Claims

This guarantee applies only to the original purchaser and proof of purchase is required for all claims. Claims for wear must show a minimum dime sized area. If you wish to file a claim under warranty, contact the authorized dealer where the flooring was purchased.