



# HOMECREST WATERPROOF

RIDGE SPC

CANYON SPC

SUMMIT SPC

RAVINE SPC



Verify that the hologram on the box ends of the material has the Unilin L2C Hologram. If it does, continue on with these instructions. If it has the i4F L2C hologram, click [here](#) for the correct installation guidelines.



## INSTALLATION GUIDELINES AND MAINTENANCE INSTRUCTIONS

### **Congratulations on your new flooring!**

When properly installed and maintained, your new flooring will look beautiful for many years.

Please read all information provided in this documentation prior to installation. Failure to follow installation instructions will void product warranty.

**PLEASE READ THESE INSTRUCTIONS THOROUGHLY PRIOR TO STARTING INSTALLATION.**

### **INSTALLER'S AND OWNER'S RESPONSIBILITY:**

Homecrest Flooring is manufactured to the highest standards of product quality, on occasion manufacturing defects may occur and not be caught at quality control. It is the joint responsibility of the installer and owner to properly inspect the flooring for defects prior to installation. If defects are found notify the seller immediately prior to proceeding. In addition, it is imperative that all item numbers/color names are verified as the intended product purchased and reflects the correct color, level of variation, finish texture, and gloss level as anticipated.

Product with visual defects or intended pattern characteristics that are deemed undesirable should not be installed. Flooring with visual defects that have been installed are not covered by warranty.



# HOMECREST

## WATERPROOF

RIDGE SPC

CANYON SPC

SUMMIT SPC

RAVINE SPC

### GENERAL PREPARATIONS:

- Flooring can be damaged when proper precautionary transportation and handling methods are not exercised prior to installation. Use care when storing, transporting, and handling flooring. Cartons should be stored flat on bottom of box, never on edge.
- Flooring material is heavy and can be challenging to move. Always use proper lifting techniques when manually moving. Never lift more than you can safely handle. We recommend the use of material-handling equipment whenever possible.
- Ensure you have the appropriate amount of material present to complete job (including an additional 5%-10% for waste, trimming and for potential future plank replacement needs).
- Verify subfloor/site conditions meet standards provided within these instructions. If they are not compliant, do not install until they have been corrected.
- This product is not recommended for residential or light commercial applications where rolling loads, including but not limited to power or manual wheelchairs, are present. We recommend using a direct glue down product like Homecrest Mission Point in these situations.
- Special consideration should be given when installing near heat sources such as fireplaces and wood stoves to avoid overheating the surface of the floor in the immediate area. Failure to do so can result in warped planks causing the floor to lift up from the subfloor and/or buckle.

### SUBFLOOR PREPARATION:

- Ensure subfloor is smooth, flat, level, and structurally sound. Must be flat within tolerance of 3/16" over a 10' radius or 1/8" over a 6' radius. Scrape, plane, or fill uneven boards, holes or cracks using a floor leveling compound to ensure the subfloor is even.
- Subfloor surface must be dry and clean. Make sure it is free of debris, wax, solvents, paint, grease, oil, dust, adhesive residue, foreign matter, and/or contaminants.

### **CONCRETE SUBFLOORS**

- New and existing concrete floors need to be well-cured and dry for a minimum of 60 days prior to installation.
- Recommended PH level between 7 and 9.
- We do not recommend installing flooring over concrete floors with high moisture or in places where hydrostatic pressure could become present. Per industry standard, ASTM F2170, RH should not exceed 75%.

### **WOOD SUBFLOORS**

- Suitable for installation over a minimum of 3/4" CDX Plywood, OSB, or APA approved plywood.
- Joist spacing should not exceed 19.2". Fasteners should be set 1/32" below subfloor surface, sand joints, smooth and fill holes or gaps wider than 1/8" wide.



# HOMECREST

## WATERPROOF

RIDGE SPC

CANYON SPC

SUMMIT SPC

RAVINE SPC

- Existing wood flooring must be properly fastened, and we recommend repairing any loose boards or squeaky areas and installing plywood on top prior to installation of this product.
- Plywood, OSB, Particleboard, etc... must be structurally sound, properly fastened, and installed per the manufacturer's instructions.
- All nail heads must be driven below the surface. Securely nail all loose boards.
- Wooden subfloors installed over a crawl space should have a moisture barrier installed in the crawl space with at least 18" of ground clearance with a black ground cover minimum 8mm thick Polyethylene overlapped a minimum of 6" and taped using a moisture resistant tape to avoid moisture migration from the ground up through the flooring.
- Wood subfloor moisture should not exceed 13%.
  - We recommend laying perpendicular to existing flooring boards.

*Caution: Some types of nails, such as common steel nails, cement, or resin coated nails, may cause discoloration of flooring. Use only non-staining fasteners with underlayment panels. The procedure of gluing and screwing underlayment panels is not recommended. Solvent based construction adhesives are known to stain vinyl floor coverings. The installer and/or consumer is responsible for any discoloration problems caused by fastener staining or use of construction adhesives.*

### EXISTING FLOOR COVERINGS

- Ceramic or porcelain tiles with grout lines must be filled with floor leveler.
- Existing sheet vinyl flooring that is fully adhered should not exceed one layer and should not be heavily cushioned.

**WARNING: DO NOT REMOVE OLD RESILIENT TILE FLOORING. THESE PRODUCT MAY CONTAIN EITHER ASBESTOS FIBERS OR CRYSTALLINE SILICA, WHICH CAN BE HARMFUL TO YOUR HEALTH.**

**DO NOT INSTALL** over rough, uneven, or soft surfaces including carpet, carpet pad and/or with additional cushioned underlay products.

**This product is not suitable for outdoor use, sunrooms, or solariums. Do not install in areas that are at risk of flooding or in spaces with saunas.**

### RADIANT HEAT

Consult with the manufacturer of the radiant heating system to ensure that it is compatible with this flooring. The selection and use of any radiant heating system is the choice and sole responsibility of the owner/purchaser/installer. In-floor heat must be embedded at least ¼" below the base of the flooring. Radiant heat system should be activated and ran at 68°F for 1 week prior to installing the flooring. Temperature in heat system must never exceed 80°F and changes in temperature settings must be gradual (5° increments). Surface temperature of flooring should never exceed 82°F. Hydronic in-floor heat requires a 72-hour acclimation period.



# HOMECREST WATERPROOF

RIDGE SPC

CANYON SPC

SUMMIT SPC

RAVINE SPC

## ACCLIMATION:

Acclimate flooring horizontally at room temperature (approx. 68°F) for 48 hours prior to installation and maintain temperatures between 55°F and 85°F during installation. Do not remove flooring from boxes during the acclimation period.

## EXPANSION SPACE:

- This flooring is designed to be installed as a floating floor and must be able to expand and contract in all directions. **Do not install** fixed objects, such as cabinets, islands, wall units etc... or heavy objects such as pool tables, large fish tanks, etc... on top of the flooring or fasten trim/molding/transition pieces directly to and/or through the floor. Fixed/heavy objects should be installed first and not placed on top of the floor. The rigid vinyl floor must be able to move around the heavy objects to avoid open joints and separating planks. Leave appropriate space around all heavy/fixed objects. A floating installation should ALWAYS stay floating!
- An expansion space should be maintained between the floor and all other vertical surfaces, including cabinets, posts, partitions, door jambs, door tracks, pipes, etc...
- Maximum installation is 5,000 square feet. Areas larger than 5,000 square feet will require the use of transition moldings. Continuous installation runs in any direction exceeding 66' requires the use of transition moldings.
- For spaces larger than 2,500 SF, a 1/2" expansion space is recommended. For spaces smaller than 2,500 SF, a 3/8" expansion space is recommended. Expansion space should be covered by moldings. Do not install moldings tight to flooring as it may pinch the flooring not allowing it to float as intended.
- For complicated installations including spaces with multiple rooms, hallways, and any doorways less than 32", it is recommended that transition moldings be used.
- This flooring can be installed in bathrooms. Leave 1/8" expansion space around toilet. Use high quality silicone caulk to fill the expansion space at the tub, shower, and all wet areas to prevent surface water seepage under floor.

## TRANSITION MOLDINGS:

When using coordinating transition moldings, it is recommended that you select the flooring planks that coordinate best with the trim prior to beginning the installation and set aside. Use selected planks during installation in the areas where trims will be installed later to ensure most desirable finished project. Install transition moldings, glue the moldings to the track or subfloor but never directly to the flooring to provide proper expansion space.

## TOOLS AND SUPPLIES:

Saw, rubber mallet, pull bar, tapping block approved for the Uniclic® locking system, 3/8" – 1/2" spacers, pencil, tape measure, straight edge/ruler, and safety goggles.

RIDGE SPC

CANYON SPC

SUMMIT SPC

RAVINE SPC

**INSTALLATION:**

- Remove baseboards, quarter-rounds, wall bases, appliances, and furniture from space.
- Remove existing flooring, if applicable.
- Undercut door casings and door jambs so material slides under easily. A 1/8" expansion space is necessary under all door jambs and casings.
- Remove all debris and dust from subfloor surface using broom and vacuum.
- Work from 2-3 boxes during installation, mixing plank visuals to minimize shade variation and provide best result. Check all planks in daylight during installation from various angles.

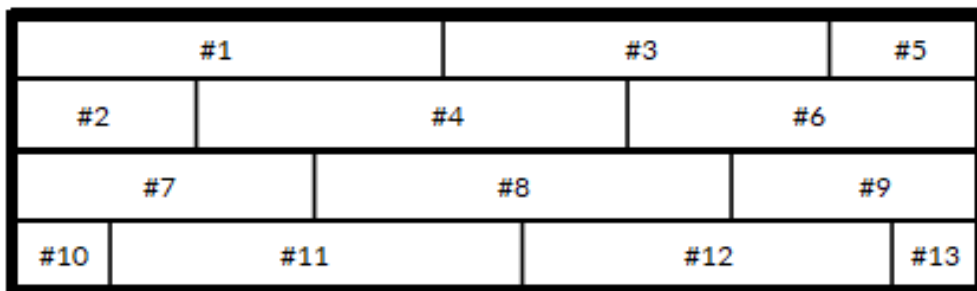
**MEASURE INSTALLATION AREA**

The board width of the first and last rows should not be less than 3". Measure the length of the room in inches. Divide it by the width of the planks that are to be installed. If the resulting number is less than 3", you will need to cut down the width of the planks on your first row accordingly.

**DIAGRAM 1**

You will start installation in the corner of your space. Your starter rows will consist of the first and second row to provide added stability, rotating adding planks to each of those rows until complete. For the balance of the installation, you will begin and finish a complete row before moving onto the next row.

Starting Wall





RIDGE SPC

CANYON SPC

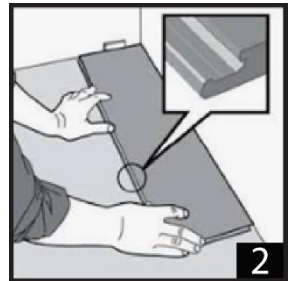
SUMMIT SPC

RAVINE SPC

### DIAGRAM 2

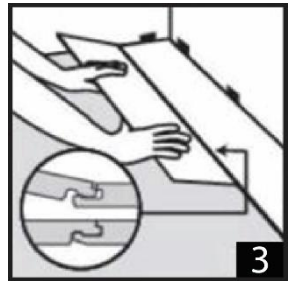
Begin the first row in the corner of the starting wall with a full-length plank (#1) with long groove side facing away from the wall. Trim off the tongue profile from the long and short side, positioning the cut edges adjacent to the wall. Set spacers between the plank and the wall, leaving a 3/8" - 1/2" gap around perimeter is necessary to allow proper expansion space. Do not remove spacers until the installation is complete.

*Note: This spacing must also be maintained between the floor and all vertical surfaces, including cabinets, posts, partitions, door jambs, door tracks, fireplaces, etc...*



### DIAGRAM 3

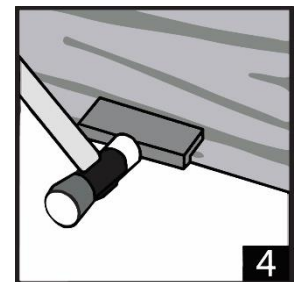
Start the second row with plank (#2). This plank should not exceed 50% of the full-length plank and must be longer than 8". At a 20 - 30 DEGREE angle, insert the long side tongue of plank (#2) into the long side groove of the first plank (#1) of row one. Lightly push the plank toward the first row on the long side and fold the plank downward until joint locks into place.



### DIAGRAM 4

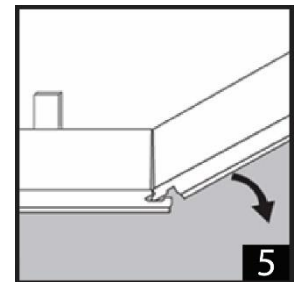
To ensure it is fully engaged, place a tapping block on the unengaged long side of the plank and gently tap along the entire length of the plank. Make sure to properly place the tapping block on the plank to avoid damaging the board. Planks should lay flat on the floor.

Cut planks should be a minimum of 8" long and joint offset should be at least 8". Whenever possible, use the piece cut from the previous row to start the next row. Adjust layout for a balanced staggered look.



### DIAGRAM 5

At a 20-30 DEGREE angle, insert the short side tongue of plank (#3) into the short side groove of first plank (#1) in row one, ensuring the sides are aligned, rotate downward until joint locks.





RIDGE SPC

CANYON SPC

SUMMIT SPC

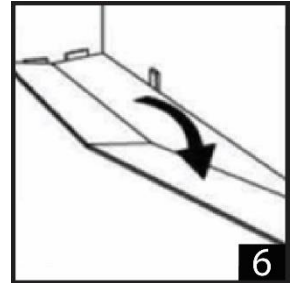
RAVINE SPC

There are two approved installation methods, Angle/Angle (A) and Angle/Tap (B), that can be used to properly engage the locking mechanisms. These methods can be used in conjunction with one another or independently throughout the installation, with the exception of the first row where you must engage the short end joints using the Angle/Angle (A) method.

### METHOD A: ANGLE/ANGLE

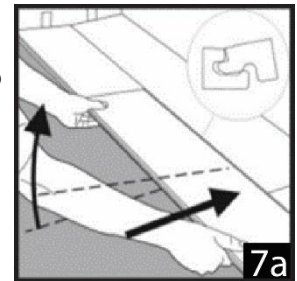
#### DIAGRAM 6

At a 20-30 DEGREE angle, insert the short side tongue of the next plank (#4) to the short side groove of the first plank (#2) in the second row and fold downward. There will be a slight gap in the long joint between planks (#4 and #1 and #3).

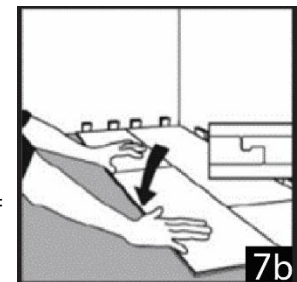


#### DIAGRAM 7A and DIAGRAM 7B

Raise the outside long edge of the plank (#4) upward 20-30 DEGREES. This will raise plank (#2) up at the same angle. Exert pressure on plank (#4) toward the first row placing the tongue in the groove of plank (#3) and rotate downward until planks are engaged. Using a tapping block, gently tap the long and short ends of plank (#4) to close any gaps and ensure it is locked tightly to the planks in the first row.



Insert tongue of the long end of the third plank (#5) into the groove of short side of the plank (#3) in the first row and rotate downward until joints lock.



Install the next plank (#6) to the second plank (#4) in the second row, engaging the short ends first and then lifting the long side of the plank up and 20-30 DEGREE angle. Push lightly on long end of plank (#6) to move the tongue into the groove then rotate downward until joints are engaged. Use tapping block on long and short ends to ensure there are no gaps and are securely engaged.

Once you've completed the first two rows, you will begin each row until completion before moving onto the next row.



RIDGE SPC

CANYON SPC

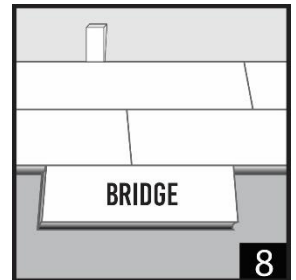
SUMMIT SPC

RAVINE SPC

### METHOD B: ANGLE TAP

#### DIAGRAM 8

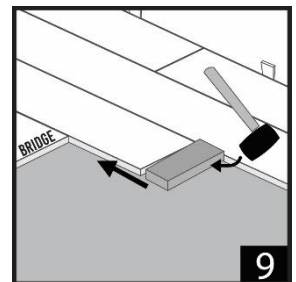
At a 20 – 30 DEGREE angle, insert the long side tongue of plank (#4) into the long side groove of the planks (#1 and #3) in the first row. Lightly push the plank toward the first row on the long side and fold the plank downward until joint locks into place, leaving a gap between the short sides of planks (#2 and #4).



#### DIAGRAM 9

Using a scrap piece of flooring, a bridge piece, engage the tongue side into long side groove of planks (#2 and #4).

Tap end of short side of plank (#4) with mallet and tapping block until plank (#4) fully engages with plank (#2) and there is no gap between short ends of planks. Be sure not to tap on edge of vinyl so as not to damage locking profile. Remove bridge piece.



Insert tongue of the long end of the third plank (#5) into the groove of short side of the plank (#3) in the first row and rotate downward until joints lock.

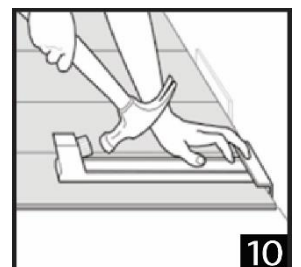
At a 20-30 DEGREE angle insert the long tongue side of plank (#6) to the second and third groove side of planks (#3 and #5) in the second row. Lightly push the plank toward the first row on the long side and fold the plank downward until joint locks into place. Insert bridge piece to planks (#4 and #6), use tapping block and mallet on short side of plank (#6) until plank full engages with plank (#4) and there is no gapping.

Once you've completed the first two rows, you will begin each row until completion before moving onto the next row.

**FAILURE TO PROPERLY ENGAGE JOINTS COULD RESULT IN PERMANENT DAMAGE TO THE END JOINT AND EVENTUAL BOARD SEPERATION.**

#### DIAGRAM 10

The use of a pull bar may be necessary when you no longer have clearance to use a tapping block.



After each row is complete, make sure that there is a 3/8" – 1/2" expansion gap around the perimeter and verify the floor is square, straight, and there are no height differences or gapping between planks.





RIDGE SPC

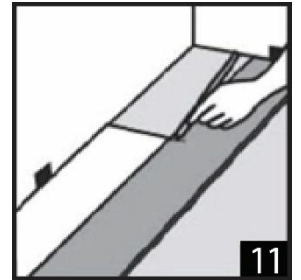
CANYON SPC

SUMMIT SPC

RAVINE SPC

### DIAGRAM 11

Cut to fit the final board of each row. Fit the last plank by rotating plank 180° with pattern side upward and place it beside the first row with its end against the far wall, leaving proper expansion space. Line up ruler across the end of the last full plank and draw a line across new plank with pencil. Use saw to cut.



### DIAGRAM 12

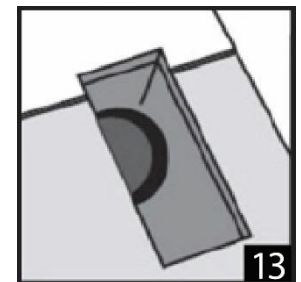
To fit the last row, lay a plank on the top of the previous row with its tongue to the wall.

Lay a ruler across the plank so that it is lined up with the side of the planks of the previous row and draw a line across the new plank with a pencil. Don't forget to allow room for spacers. Cut the plank with a utility knife/saw and attach into position. The last row should be no less than 3" in width.



### DIAGRAM 13

Door frames and heating vents also require expansion space. First, cut the plank to the correct length. Then place the cut plank next to its actual position and use a ruler to measure the areas to be cut out and mark them. Cut out the marked point allowing the necessary expansion area on all sides.



### DIAGRAM 14

Trim door frames by turning plank upside down and using a handsaw to cut away the necessary height so planks slide easily under frames. Complete installation by installing your baseboard moldings covering the expansion gaps allowing 1/8" clearance between the molding and the flooring planks. Do not install moldings tight to flooring. Nail moldings to the wall surface, not through the flooring. *Failure to provide proper clearance between moldings and flooring or nailing moldings through flooring will cause the floor to become pinned and could result in future plank separation or buckling.*





RIDGE SPC

CANYON SPC

SUMMIT SPC

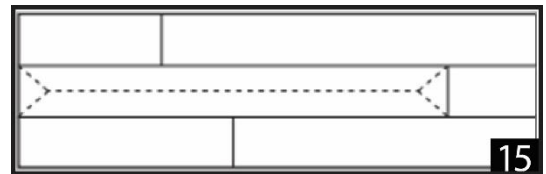
RAVINE SPC

### PLANK REPAIRS

Should a plank become damaged and need to be replaced, follow these simple steps:

#### **DIAGRAM 15**

Using saw, make cut down two triangle cuts near the end joint and then connect the points with one long cut down the center of damaged plank. Lifting the edge of each piece of damaged plank at a 20 - 30 DEGREE angle until it releases from the adjacent planks and remove.



Using a sharp utility knife trim off tongue strip on both the long and short sides of the replacement plank. Also, remove the groove strip of the short end of the replacement plank. Be careful not to damage the surface of the plank. Place double-sided acrylic double face tape for vinyl floors under the edges of the existing floor where the tongues and grooves of the replacement plank were removed. Only remove the paper from the tape that will be facing up leaving the paper on the side placed against the subfloor. Tape should not be adhered to substrate.

Apply a bead of Taylor 2049 Tongue and Groove Adhesive to the exposed groove along the long and short sides of the installed planks. Do not use excess adhesive. While adhesive is still wet, install replacement plank by angling the long groove of the replacement plank under and over the tongue of the installed floor plank until the finished edge of the replacement plank is tight against the finished edge of the installed floor plank and short ends are properly aligned to fit into place. Rotate plank downward, pressing the tongue of the long and short sides into the adhesive. Roll edges with a steel hand roller. Remove any excess adhesive that comes to the surface with a damp cloth and mild detergent then dry with soft cloth.

#### POST INSTALLATION:

- Save a few planks in case of accidental damage. Planks can be replaced or repaired by a flooring professional, if necessary.
- If other trades are in the work area, a floor protector is highly recommended to help protect the finish of the floor.



### CARE AND MAINTENANCE

- Temperature in space should be maintained between 41°F - 95°F.  
*Please note that extreme variances in temperature can cause expansion and contraction not only in the flooring itself but the structure as well. Flooring can warp if subject to excessive heat and will shrink if exposed to excessive cold. Exposure to long term direct sunlight can cause expansion damage to your floor. Surface of flooring should not exceed 82°F.*
- Avoid exposure to direct sunlight for prolonged periods of time. Use drapes or blinds to minimize direct sunlight during peak sunlight hours.
- Flooring can withstand topical water and water penetration without damage. Water leakage over or around the outer edges of flooring can damage subfloor, so clean up topical spills as soon as possible. CAUTION: Floor may be slippery when wet.
- Sweep regularly to remove surface grit and dust. Use a damp cloth or mop to clean up any dirt or footprints.
- Never use wax, polish, abrasive clears or scouring agents as they may dull or distort the finish.
- Use protective felt pads under furniture and remove debris from them regularly to avoid damage.
- Use doormats at entrance ways to protect floor from discoloring. Avoid using rubber or latex backed rugs, as they may stain or discolor floor. If you have an asphalt driveway, use a heavy-duty doormat at your main door, as chemicals in asphalt can cause flooring to yellow. Use latex-based driveway sealer to minimize potential staining from asphalt drives.
- Furniture with castors require the use of a floor protection pad/mat.
- Do not drag or slide heavy objects across floor.
- High heels and pets with unclipped nails can scratch or damage flooring.



## HOMECREST CANYON SPC WARRANTY

### Warranty Information

This guarantee is for replacement of Homecrest Canyon SPC flooring and labor as described below. It does not cover costs incurred with loss of time, incidental expenses or any other damage. It does not cover damage from improper installation or maintenance (including side or end gapping), tears, indentations, stains or reduction in gloss level due to normal use and/or exterior applications. Gapping, shrinkage, squeaks, fading or structural subfloor related issues are not covered under this warranty. Temperature variations - above 120°F (48.9°C) or below 0°F (-17.8°C) - may cause expansion or contraction of the product.

### Residential Installations: 25 years

Our 25-year Residential Limited Warranty means that for 25 years, from the date of purchase, your floor will be free from manufacturing defects and will not wear through\*\* or permanently stain from common household stains when installed and maintained according to installation instructions supplied with each carton.

**Within One Year** If a defect covered by this warranty is reported in writing within one year of purchase, we will supply new material of the same or similar quality to replace the defective material. Reasonable labor costs will also be covered.\* We will not pay to repair or replace material with defects that were apparent before or during installation.

**Within Two Years** If a defect covered by this warranty is reported in writing after one year but within two years of purchase, we will supply new material of the same or similar quality to replace the defective material. Fifty percent of reasonable labor costs will also be covered.\* We will not pay to repair or replace material with defects that were apparent before or during installation.

**After Two Years** If a defect covered by this warranty is reported in writing after two years but within twenty five years of purchase, we will supply new material of the same or similar quality to replace the defective material. We will not pay labor costs.

### Light Commercial Installations: 7 years

Our 7-year Light Commercial Limited Warranty means that for 7 years, from the date of purchase, your floor will be free from manufacturing defects and will not wear through\*\* or permanently stain from common household stains when installed and maintained according to instructions supplied with each carton.

**Within One Year** If a defect covered by this warranty is reported in writing within one year of purchase, we will supply new material of the same or similar quality to replace the defective material. Reasonable labor costs will also be covered.\* We will not pay to repair or replace material with defects that were apparent before or during installation.

**Within Two Years** If a defect covered by this warranty is reported in writing after one year but within two years of purchase, we will supply new material of the same or similar quality to replace the defective material. Fifty percent of reasonable labor costs will also be covered.\* We will not pay to repair or replace material with defects that were apparent before or during installation.

**After Two Years** If a defect covered by this warranty is reported in writing after two years but within seven years of purchase, we will supply new material of the same or similar quality to replace the defective material. We will not pay labor costs.

\*NOTE: reasonable labor costs shall be determined solely by the manufacturer.

\*\*NOTE: Wear through means complete loss of wearlayer resulting in changes to the printed visual over a minimum of 3% of the total installation.

### Claims

This guarantee applies only to the original purchaser and proof of purchase is required for all claims. Claims for wear must show a minimum dime sized area. If you wish to file a claim under warranty, contact the authorized dealer where the flooring was purchased.